
ArXtor

series

User Manual

DISC ArXtor 1000 Lite/Appliance

DISC ArXtor 4000 Lite/Appliance

DISC ArXtor 7000 Lite/Appliance



Table of Contents

Chapter 1: Copyrights Trademarks and Contact Information 4

Notice of Copyright 5

Changes 5

Trademarks Used in this Manual 6

Contacting DISC 6

Chapter 2: Safety Instructions 7

Rapid Method 8

Intended Use 8

Use of Interjective Terms 8

Ban on Arbitrary Reversions and Changes 8

Repairs 8

Fire and Shock Hazard 9

Opening the Unit 9

Safety 9

Data Security 9

Fuses 10

Professional Disc Media 10

DVD RAM and DVD-R Media 10

Chapter 3: Overview 11

DISC ArXtor 1000 Lite/Appliance Components 12

DISC ArXtor 4000 Lite/Appliance Components 13

DISC ArXtor 7000 Lite/Appliance Components 14

Installed Equipment 15

Structure of Model Designation 15

Example of Model Designation 16

DISC ArXtor Series Front 16

Touch Panel 17

DISC ArXtor Series Rear 18

Chapter 4: Setup 19

Checking the Delivery 20

Removing the Transportation Fixtures 21

Mounting the Stands 22

Placing the Optical Library 23

Connecting to a Host Computer 24

Connecting Line Voltage 24

Chapter 5: Operating the Optical Library 25

Powering on the Optical Library 26

Powering off the Optical Library 27

Handling Media 28

Handling Packs 28
Importing and Exporting Media 29
The Mailslot 29
Using Packs 30
Removing Packs 30
Inserting Packs 31

Chapter 6: The User Interface 32

The User Interface 33
User Interface Modes 34
Certificate Key 34
User Interface Mode 35
Functional Areas Available 35
User Mode 35
Info Menu 35 - 36
Admin Mode 37
Media Menu 37 - 39
Library Menu 40
Settings Menu 41
Diagnostics Menu 42
Virtual Machines 43
Setup of the Virtual Machines 43
Virtual Machine Management 43
Configuration of the Virtual Machines 44
Console Display 44
Autostart 44
Enable VNC 44
DVD Management 45
HDD Management 46
Rebuild Virtual Machines 46
Control Virtual Machines 47 - 48

Appendix A: Technical Data 49

Technical Specifications 50 - 51
Slot Upgrades 52

Agency Approvals 53

FCC Declaration 54
CE-Declaration of Conformity 55 - 57

CHAPTER 1: COPYRIGHTS TRADEMARKS AND CONTACT INFORMATION

- Notice of Copyright
- Disclaimer
- Trademarks
- Contacting DISC

NOTICE OF COPYRIGHT

All rights reserved Copyright 2012 by DISC Archiving Systems B.V.
No part of this publication may be reproduced, stored in a retrieval system, or traDISCitted in any form or by any means, electronic, mechanical, photocopying, recording or otherwise, without the prior written consent of:

DISC Archiving Systems B.V.
Waarderweg 52G
2031 BP Haarlem
The Netherlands

Disclaimer

DISC Archiving Systems B.V. (DISC Archiving Systems B.V. and all of its subsidiaries) takes no responsibility and offers no warranty with respect to the adequacy of this documentation, or the procedures which it describes for any particular purpose, or with respect to its adequacy to produce any particular result. In no event shall DISC GmbH, its employees, its contractors or the authors of this documentation be liable for special, direct, indirect or consequential damages, losses, costs, charges, claims, demands, or claim for lost profits, fees or expenses of any nature or kind.

CHANGES

The following paragraph does not apply where such provisions are inconsistent with local law. Some states do not allow disclaimer of express or implied warranties in certain transactions. Therefore, this statement may not apply to you:

The material in this documentation is for information only and is subject to change without notice. While reasonable efforts have been taken in the preparation of this manual to assure its accuracy, DISC GmbH assumes no liability resulting from any errors or omissions in this manual, or from the use of the information contained herein.

DISC GmbH reserves the right to make changes in the product design without reservation and without notification to its users.

TRADEMARKS USED IN THIS MANUAL

DISC, and the DISC logo are registered trademarks of DISC GmbH

CONTACTING DISC INTERNATIONAL

INTERNET

www.disc-group.com

MAILING ADDRESS

DISC Archiving Systems B.V.
Waaderweg 52G
2031 Haarlem
The Netherlands

SALES EMEA & ASIA PACIFIC

Tel: +31 (0) 235172 635
E-Mail sales@disc-group.com

TECHNICAL SUPPORT EMEA & ASIA PACIFIC

Phone: +49 (0) 6721 9878211
Fax: +49 (0) 6721 9878220
E-Mail: support@disc-group.com

SALES USA

Tel: 866 960 9345 / +1 303 704 4625
E-Mail salesUS@disc-group.com

TECHNICAL SUPPORT USA

Phone 866 960 9345
E-Mail: supportUS@disc-group.com

Before contacting DISC Technical Support, please have the following information available

- Model, Serial Number and production date of your Optical Library
- Description of Optical Library environment (Operating System, software revision, and hardware)
- Detailed description of the problem

CHAPTER 2:

SAFETY INSTRUCTIONS

- Intended Use
- Residual Risks
- Safety

Rapid Method

DISC ArXtor Series: ArXtor 1000 Lite
 ArXtor 4000 Lite
 ArXtor 7000 Lite
 ArXtor 1000 Appliance
 ArXtor 4000 Appliance
 ArXtor 7000 Appliance

INTENDED USE

The DISC ArXtor Series Optical Libraries are controlled by a host computer or combined server unit (NAS). The Optical Libraries were designed exclusively to read and write bare media, especially the Blue Laser (BD) media, and are not intended for any other use.

Improper use of the Optical Library increases residual risk. Any person using the Optical Library should read and understand the User Manual, and in particular, the safety instructions included within the User Manual.

USE OF INTERJECTIVE TERMS

WARNING: This word calls attention to a procedure or practice, which could cause personal injury if not correctly performed.

CAUTION: This word calls attention to a procedure or practice, which could result in damage to the product if not correctly performed.

NOTE: This word draws the users' attention to information that can improve understanding of the product.

Disregarding safety messages could result in personal injury or damage to the Optical Library.

BAN ON ARBITRARY REVERSIONS AND CHANGES

The Optical Library must not be altered or changed in any way that does not comply with applicable safety regulations.

REPAIRS

Repairs must be carried out only by DISC staff, or DISC authorized service providers.

DISC will not be liable for any damage caused from repair by unauthorized individuals.

Repair by unauthorized individuals may void your warranty.

FIRE AND SHOCK HAZARD

To prevent fire and electrical shock, do not expose the unit to rain or moisture.

OPENING THE UNIT

To prevent electrical shock, remove line cord before opening the unit.

CAUTION: *Do not operate the Optical Library while covers are removed. Ambient light and dust will interfere with Optical Library operation, and moving parts increase risk of personal injury.*

The exchange of the air filter can be done as 'hot swap' operation without a need to open the Optical Library!

SAFETY

This product is in the used way a Laser Class 1 device. Disc access is accomplished via a laser beam. The laser beam does not represent any risk for the user.



This product complies with the DHHS Rules 21 CFR chapter 1, sub chapter J, accession number 9520184, applicable at the date of manufacture.

CAUTION: *The drives become under Laser Class 2M and 3B radiation if they get opened! This includes the risk of injury if you stare into the beam or expose something to the beam. You must not remove and open an optical drive of this Optical Library!*

DATA SECURITY

Access to media, packs, and magazines is available only when a release command is sent for the host. It is your responsibility to allow access to the host computer (where the release command is initiated) to authorized personnel only.

FUSES

The DISC ArXtor Series Optical Library must only be connected to electrical circuits secured by a 16 A fuse. For USA and Canada the DISC ArXtor Series Optical Library must only be connected to electrical circuits secured by a 20 A fuse.

There are several internal fuses which only may be accessed by certified service staff! Please call your dealer in case of service needs.

PROFESSIONAL DISC MEDIA

The bare BD media surfaces are covered by a special 'hard coating' technology. Nevertheless they are sensitive to scratches and fingerprints. Handle writable media with care. Damaged media could result in loss of data.

All bare media shall be handled outside of the Optical Library within a certain cover! To export bare media best use the DISC Offline Packs (removable front site 15 pcs media magazines).

NOTE: For best performance, DISC recommends that only DISC certified media be used.

DVD RAM and DVD-R MEDIA

Recordable DVD media (especially DVD-RAM) are very sensitive to scratches and fingerprints. Please handle recordable DVD media with care, damaged or polluted media might end in a loss of data.

CHAPTER 3:

OVERVIEW

- DISC ArXtor Series Components
- Installed Equipment
- DISC ArXtor Series Front
- DISC ArXtor Series Rear

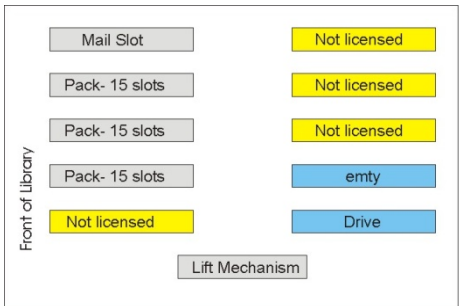
DISC ArXtor 1000 Lite/Appliance

COMPONENTS

- 3 or 4 removable Packs (holding 15 media each)
- 1 Mailslot (for importing and exporting media)
- 2 drives
- iSCSI Connectivity for drives and robotic
- Single-Core CPU, 2GB RAM (Lite only)
- Dual-Core CPU, 8GB RAM (Appliance only)
- Dual internal cache hard drives (Appliance only)
- Optical storage expansion, 8x hard drives (Appliance only)

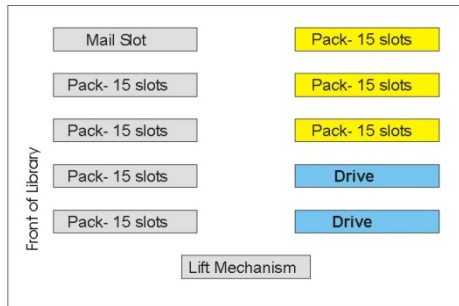
DISC ArXtor-1000-105-2 Optical Libraries have 4 Packs rather than 3; and will have filled up the empty rear side drive bays with additional Magazines (holding 15 media each).

DISC ArXtor-1000-045-2



Fixed Number of Media Slots: 45
2 Drives

DISC ArXtor-1000-105-2



Variable Number of Media Slots: 105
2 Drives

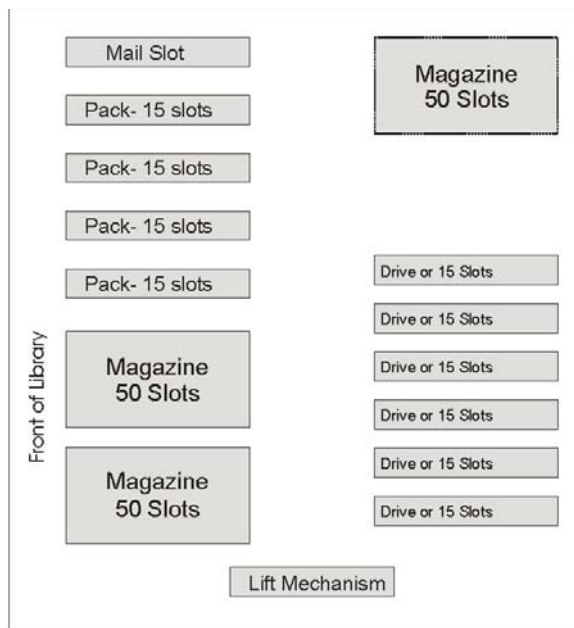
DISC ArXtor 4000 Lite/Appliance

COMPONENTS

- Up to 5 Magazines (holding 50 media each)
- Up to 4 removable Packs (holding 15 media each)
- 1 Mailslot (for importing and exporting media)
- Up to 6 drives
- iSCSI Connectivity for drives and robotic
- Single-Core CPU, 2GB RAM (Lite only)
- Dual-Core CPU, 8GB RAM (Appliance only)
- Dual internal cache hard drives (Appliance only)
- Optical storage expansion, 16x hard drives (Appliance only)

The DISC ArXtor 4000 with 145 slots can be upgraded up to 400 slots (with 2 drives) or 340 slots (with 6 drives). This Optical Libraries will have filled up the empty rear side drive bays with additional Magazines or Drives.

DISC ArXtor-4000



Variable Number of Media Slots, e.g.:

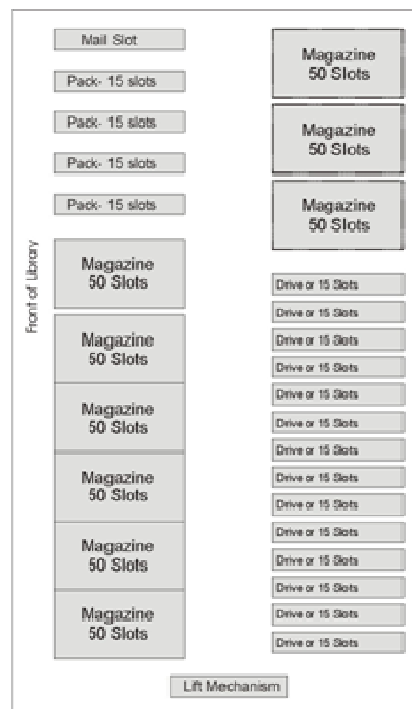
145 slots with 6 drives
400 slots with 2 drives

DISC ArXtor 7000 Lite/Appliance COMPONENTS

- Up to 9 Magazines (holding 50 media each)
- Up to 4 removable Packs (holding 15 media each)
- 1 Mailslot (for importing and exporting media)
- Up to 10 drives
- iSCSI Connectivity for drives and robotic
- Single-Core CPU, 2GB RAM (Lite only)
- Dual-Core CPU, 8GB RAM (Appliance only)
- Dual internal cache hard drives (Appliance only)
- Optical storage expansion, 16x hard drives (Appliance only)

The DISC ArXtor-7000 with 540 slots can be upgraded to a DISC ArXtor-7000 up to 690 slots. This Optical Libraries will have filled up the empty rear side drive bays with additional Magazines or Drives.

DISC ArXtor-7000



Variable Number of Media Slots, e.g.:




690 slots with 2 drives

540 slots with 4 drives

The position numbers are counted from the top to the bottom.

INSTALLED EQUIPMENT

Refer to the serial number plate on your Optical Library for model and equipment information.

A		S/N	X01001-XX
C: xxx-xxxV~ xx/xxHz xA		TYPE	B
Made in Germany		MANUFACTURED	
 <p>Disc Archiving Systems GmbH Saarlandstrasse 377 D-55411 Bingen am Rhein</p>		 	<div style="border: 2px solid black; padding: 5px; text-align: center;"> CLASS 1 LASER PRODUCT <small>TO IEC 825-1:1993</small> </div>
<p>This product complies with 21 CFR 1040.10 and 1040.11.</p> <p>This device complies with Part 15 of the FCC Rules. Operation is subject to the following two conditions: (1) This device may not cause harmful interference, and (2) this device must accept any interference received, including interference that may cause undesired operation.</p> <p>Ce appareil numérique de la class B respecte toutes les exigences du Règlement sur le matériel brouilleur du Canada.</p> <p>This Class B digital apparatus meets all requirements of the Canadian Interference-Causing Equipment Regulations.</p>			

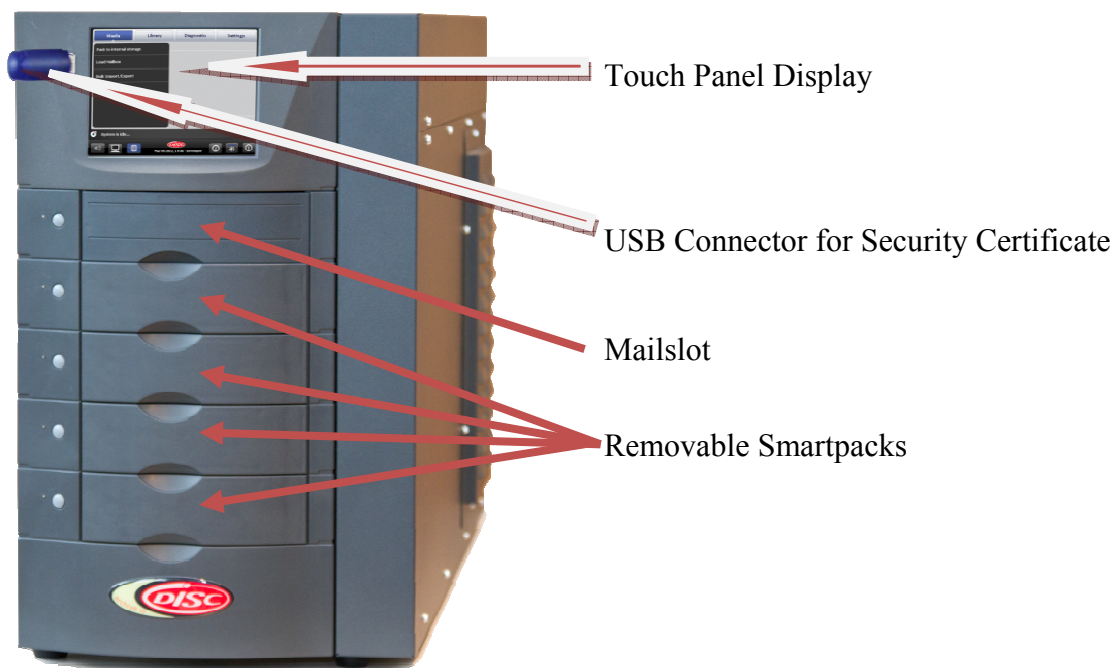
STRUCTURE OF MODEL DESIGNATION

DISC ArXtor SeriesTM-T-XXX-YY-Z-b	
A	Model
B	Technology type
XXX	Number of existing media slots
YY	Number of built-in drives
Z	L- -ArXtor Lite A – ArXtor Appliance Ax – ArXtor Storage Expansion
b	Options

EXAMPLE OF MODEL DESIGNATION

ArXtor1000-145-02-L	
ArXtor1000	Type of Library
145	145 slots
02	2 drives
L	Lite

DISC ArXtor SERIES FRONT



Touch Panel Display

The touch panel display is used to operate the Optical Library without the aid of any external host software for Optical Library control.



DISC ArXtor SERIES REAR



CHAPTER 4:

SETUP

- Checking the Delivery
- Removing the Transportation Fixtures
- Mounting the Stands
- Placing the Optical Library
- Operation Modes
- Connecting to a Host Computer
- Connecting Line Voltage

CHECKING THE DELIVERY

Review the following table to ensure that you have all the required equipment.

Equipment	Quantity
Power Cord	2
Power Cord USA (only USA)	2
Ferrite	2
User Manual CD	1
Allen type screw driver	1
Allen Type screws	4-6 (missing screws to fully fix the right side cover)
Stands	4 (only by ArXtor 4-7000)
Optical Library	1
DISC GUI (Remote Tool)	On the User Manual CD
Admin Certificate File	On the User Manual CD

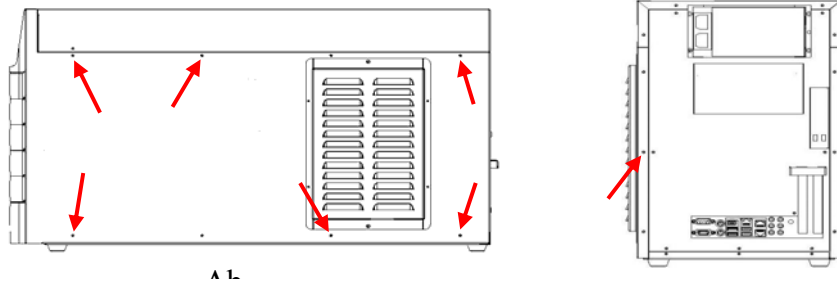
REMOVING THE TRANSPORTATION FIXTURES

NOTE: More detailed information about removing transportation fixtures can be found on the label affixed to the Optical Library.

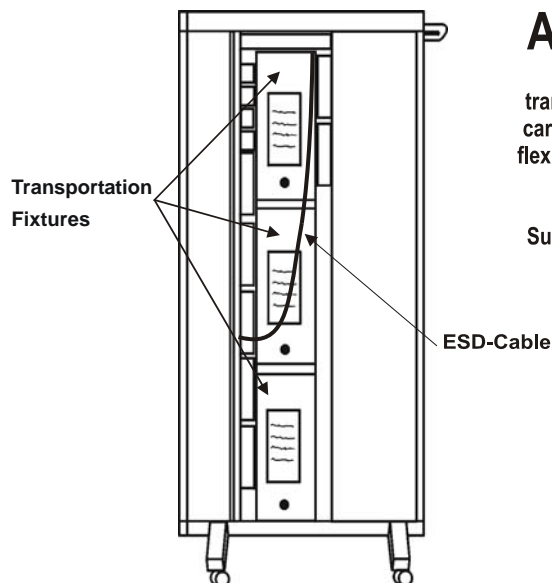
▼ Removing the Transportation Fixtures

1. Remove the screws that affix the right cabinet cover of the Optical Library.
2. Remove the right cabinet cover.
3. Remove the transportation fixtures inside the Optical Library.

ArXtor 1000



ArXtor 3-7000



ATTENTION

When removing the transportation lock please carefully protect the black, flexible cable from bending, twisting or other mechanical damage. Such damage may impact the proper function of the library.

CAUTION: Powering on the Optical Library with transportation fixtures inside can damage the robotics. Do not operate the Optical Library while covers are removed. Ambient light will interfere with Optical Library operation, and moving parts increase risk of personal injury.

MOUNTING THE STANDS

WARNING: Do not operate the Optical Library without the stands installed!

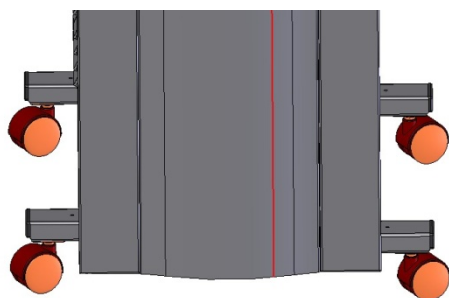
▼ Mounting the Optical Library Stands ArXtor 4-7000

NOTE: Two people are required to perform this procedure.

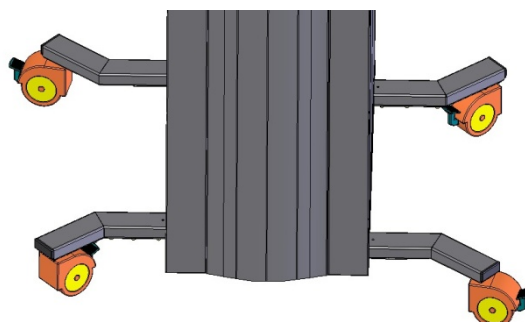
1. Tilt the Optical Library to the left.
2. Push the front stand for the right side into the slot near the bottom of the Optical Library until it “clicks” in.
3. Push the rear stand for the right side into the slot near the bottom of the Optical Library until it “clicks” in.
4. Tilt the Optical Library to the right.
5. Push the front stand for the left side into the slot near the bottom of the Optical Library until it “clicks” in.
6. Push the rear stand for the left side into the slot near the bottom of the Optical Library until it “clicks” in.

NOTE: The roles of a DISC ArXtor-7000 have to stand to the outside. Take care to mount the stands angled to the right side

ArXtor-4000



ArXtor-7000



PLACING THE OPTICAL LIBRARY

The ArXtor Series Optical Libraries are intended for use in office or computer lab environments.



CAUTION: *After delivery, the Optical Library should be allowed to come to room temperature before operation.*

When placing the Optical Library...

Avoid places with:

- extreme temperature
- excessive sun exposure
- high humidity
- contact with water
- contact with chemicals
- extreme vibration

The right location has:

- stable, even support
- sufficient space to pull out and service the unit
- ambient maximum of 37° C

CAUTION: *To ensure sufficient cooling airflow and to have enough work space to exchange the air filter, at least 50 cm free space has to be left at the right side of the Optical Library.*

CONNECTING TO A HOST COMPUTER

CONNECTING THE iSCSI INTERFACE

The ArXtor interface has three iSCSI connectors. Only one of these connectors is working. The Ethernet cable must be plugged in to the market connector.

The data transfer (read/write) and all mechanical operations including loading and unloading media, and importing and exporting media are controlled via the iSCSI interface.

CONNECTING LINE VOLTAGE

Before connecting the Optical Library to the electrical outlet, mount the ferrite to the power cord as close to the Optical Library as possible.

All DISC ArXtor Libraries have auto-switching power supplies. No adjustment is needed to switch between 110 volt and 220 volt electrical systems.

All DISC ArXtor Series Optical Libraries are equipped with a redundant power supply unit.

In case one of the PSU modules is failing or temporarily not connected, the Optical Library can run with the remaining one. An acoustic alarm (beep) is given until the failing module has been exchanged or the missing mains cable is connected again.

CAUTION: *Your Optical Library is equipped with a redundant PSU. You always should connect both line voltage cables! In order to get a high availability system it is recommended to connect each line voltage cable to a different power circuit.*

WARNING: *The Optical Library is not electrically disconnected from line voltage when powered down. To electrically disconnect the Optical Library from line voltage you must disconnect the power cord.*

CAUTION: *The DISC ArXtor Series Optical Library must be connected to an electrical circuit that is secured with a 16 Amp fuse.*

CHAPTER 5:

OPERATING THE OPTICAL LIBRARY

- Powering on the Optical Library
- Powering off the Optical Library
- Handling Media
- Importing and Exporting Media
- The Mailslot
- Using Packs

POWERING ON THE OPTICAL LIBRARY

To power on the unit, press the power buttons on the redundant power supply at the back side of the Optical Library.

If the Optical Library was powered off via the touch panel, the Optical Library must be powered on via the power switch on the backside.

CAUTION: *The touch panel does not show any information during the booting process.
Depending on the configuration it can take some minutes until the system is up and running.
Please wait until the DISC Logo is seen on the display and the SmatPack LED are on.*

During boot-up the robotics will rezero. While this is occurring, you will hear mechanical noises from the unit.

The Optical Library robotics is normally controlled via a host software application. For information on how to operate the Optical Library using a host, see your host software user manual.

CAUTION: *Do not operate the Optical Library while covers are removed. Ambient light will interfere with Optical Library operation, and moving parts increase risk of personal injury.*

POWERING OFF THE OPTICAL LIBRARY

To shut down the Optical Library press the power button on the touch panel.



If the power button on the display cannot be used, press the power button on the back side of the library.

ArXtor Appliance only!

Before the Optical Library will be powered off via the power button on the back side, shut down the virtual machines.

CAUTION: *Do not power off the Optical Library using the power buttons of the redundant power supply.*

HANDLING MEDIA

HANDLING EXPOSED MEDIA

Exposed media should be handled without touching the readable areas of the disc. Scratches, fingerprints, or any other artifact on the disc reading surface may cause loss of data. Best wear cotton gloves when handling the bare media and keep them only within a well suited case like a 'jewel case' or the DISC Offline Packs!

NOTE: *The BD media are protected by a special hard coated surface. You may clean them carefully using a soft, damp cloth without cleaning agent!*

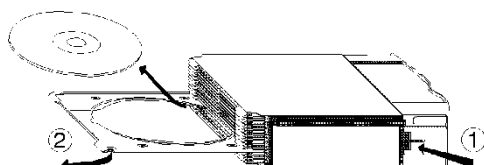
HANDLING PACKS

Media trays within packs are secured by the casing and will not fall out as long as all trays are in the pack (with or without media in all trays).

Packs with missing trays must be handled carefully. The remaining trays are locked into the pack but the medium below the removed tray is exposed and may move or fall out!

▼ Removing Trays from a Pack

1. Press the red button at the left side of the Pack.
2. Pull out the tray.



IMPORTING AND EXPORTING MEDIA

Media is imported and exported in one of two ways:

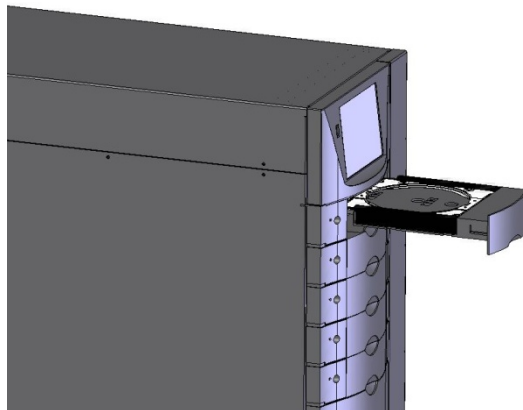
- Through the Mailslot
- Through Packs

Which method you use will depend on the circumstance, and whether or not you have a host controlling the Optical Library.

THE MAILSLOT

When using host software to control the Optical Library, the mailslot will automatically open when an import or export command is sent from the host. After importing or exporting a medium, the host application usually closes the mailslot automatically as well. If your host does not automatically close the mailslot drawer, you can close it by pressing the [Enter] key, or gently pushing the front of the drawer.

For information on importing and exporting media without using a host application, see “Operate Menu” on page 60.



CAUTION: *Even if the bare BD media are protected by a special hard coating, you must not import media with polluted or scratched surface into the library! Avoid to touch the read/write area of the media with your fingers! Place exposed media immediately into a well suited case or cartridge!*

USING PACKS

DISC Media Packs are devices that contain 15 separate trays for media, surrounded by a case. You can quickly import or export multiple discs at once using packs, that would otherwise take much longer to import or export through the Mailslot. The Packs are also the best way to carry around or store the bare media.

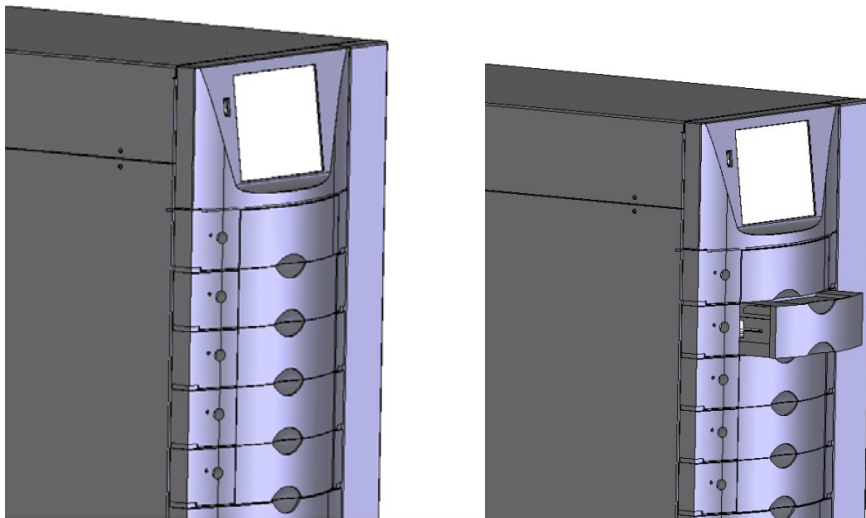
Every Pack has a world wide unique serial number which is stored in a 512k Smart Card chip and labeled with barcode on the Pack case. Therefore they easily can be handled and kept track by corresponding software applications.

REMOVING PACKS

Packs can be removed when the status indicator is green or yellow. Packs are hot swappable, meaning that the packs can be removed or inserted while the machine is in operation. For more information on handling packs once they are removed from the Optical Library, see “Handling Packs” on page 46

NOTE: *For safety reasons, adjacent packs cannot be removed at the same time.*

NOTE: *Magazines are fixed to the Optical Library, and cannot be removed. To remove media from magazines, either move the media to a pack for removal, or remove it using the mailslot.*



Action	Status	Display
Press the pack button	The LED starts to flash yellow; all media are returned to the pack. LED flashes green; the pack is now ready to be removed.	The display reads... Please push pack <number of pack being removed>
Push the front of the pack towards the Optical Library.	The pack releases from the Optical Library. The LED is not lit.	The display reads... Please remove pack <number of pack being removed>

NOTE: *If the Optical Library is controlled by a host application, direct pack access from the Optical Library front panel may be disabled (visible at the status LED that turns to amber in this case). If your host software runs in this manner, packs can only be released by the host computer.*

INSERTING PACKS

Action	Status	Display
	LED is dark.	
Push the pack into the Optical Library.	LED flashes yellow, then changes to green Optical Library scans the pack for media.	

CHAPTER 6:

THE USER INTERFACE

- User Interface Modes and Commonly Used Functions

THE USER INTERFACE

The Optical Library User Interface is used to configure and operate the Optical Library without using a host computer.

USER INTERFACE MODES

The User Interface has 3 modes:

- User Mode
- Admin Mode
- Service Mode

Access to User Mode is available to any user.

To get access to the Admin Mode the Administrator Certificate Key is needed.

To get access to the Service Mode the Service Certificate Key is needed.

CERTIFICATE KEY

The Admin Certificate file is stored on the USB Stick which comes with each ArXtor Optical Library. The Certificate File is unique and does not work on other ArXtor Optical Libraries

To get access to the Admin function plug in the USB stick on the USB port at the front. The Access level on the display will show "Admin"

Refer to the table on the next page to determine what functional areas are part of which mode:

User Interface Mode	Functional Areas Available
User-Mode	Info Jukebox Summary Backlight Control Alarm-off
Admin-Mode	Info Jukebox Summary Backlight Control Alarm-off Media Settings VM Management (Appliance only)
Service-Mode	Info Jukebox Summary Backlight Control Alarm-off Media Settings VM Management (Appliance only) Library Diagnostics Settings

USER-MODE

In the **User Mode** no operations can be performed. Only information about the Optical Library are available.

INFO MENU

The Info Menu provides information about the Optical Library configuration and capacity.

The following information is available in the Info Menu:

Info	Available Information
Jukebox Information	Vendor Product Serial Number Hardware Revision Hardware Date Firmware Release Firmware Date Slot Count Mailslot Count Drive Count Access Level SmartPack IDs Controller Firmware
Drive Information	Vendor Product FW Release Serial GDA HW Version GDA FW Version 5V 12V Temperature Power-on Time Loaded Time Drive Loads Drive Load Errors Drive Unload Errors

ADMIN MODE

To activate the **Admin Mode** a USB stick with the Administrator Certificate File must be plugged-in into the USB port at the front panel.

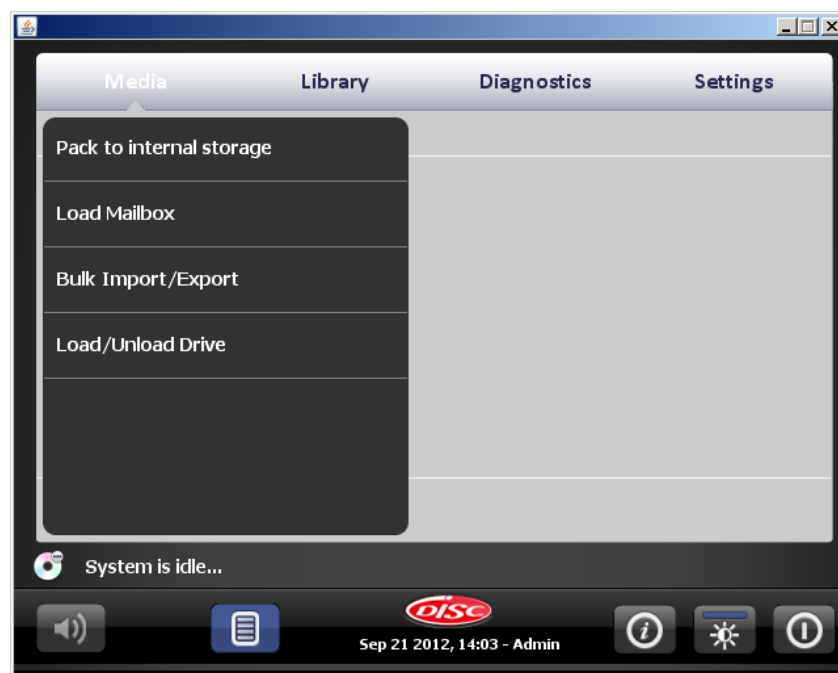
In the Admin Mode, the **Media**, **Library** and **Settings** menus become available. All necessary settings for installing the Optical Library can be configured in this mode. It is also possible to fully operate the Optical Library without using a host application in this mode.

MEDIA MENU

The Media menu offers several functions to control or operate the Optical Library without host software.

CAUTION: *Disconnect the Optical Library from the host before executing any Operate menu commands.*

The Media Menu has 4 sub-menus:



Pack to internal Storage:

Used to move all media in packs (front of Optical Library) to magazines (rear of Optical Library). This is the fastest way to import large quantities of media to the Optical Library.



Load Mailbox:

Used to import and export a single medium.



Bulk Import/Export

Used to import several media serially into the Optical Library.

Select the start slot and the end slot.

After import of the first medium, close the Mailbox with the Mailbox button. The next empty tray is automatically loaded to the Mailbox for the next import.



Load/Unload Drive:

Used to load/unload a medium to/from any drive



LIBRARY MENU



Reactivate: To activate the robotic function after a robotic error

Rezero Unit: To stop and reset the jukebox to the last set (by the horst application) function mode.

SETTINGS MENU



Enable/Disable Alarm:

Used to permanently enable or disable the alarm sound.

TCP/IP Settings:

The TCP/IP function is used to preset the static IP address and configure network parameters.

Time and Date:

Used to set time, date and timezone

DIAGNOSTICS MENU

NOTE: *Unauthorized use of Service Mode functions may damage the Optical Library and void your warranty.*

To activate the **Diagnostics Menu** a USB stick with the Service Certificate File must be plugged in into the USB port at the front panel.

In the Service Mode, all functions and submenus become available. The functions available in the Diagnostics Menu should only be used by trained technicians.

NOTE: *For more information about the Service Mode, see the ArXtor Series Service Manual.*

ArXtor APPLIANCE – VIRTUAL MACHINES

The architecture of the ArXtor Appliance allows the installation of two virtual machines. Both virtual machine are working independent and can have different Operating Systems.

SETUP OF THE VIRTUAL MACHINES

- For the installation of one and/or two Virtual Machines the ArXtor Appliance must be connected to an existing network.
- The ISO image of the Operating System which should be installed must be available on a network folder.
- The DISC-Gui must have access to the ArXtor Appliance.

VIRTUAL MACHINE MANAGEMENT

The Virtual Machine Management menu has three sub-menus



CONFIGURE



Console display:

Function to select the virtual machine if a monitor is connected to the ArXtor.

Autostart:

Option to start the virtual machine(s) automatically with booting of the ArXtor.

Enable VNC.

Function to select the virtual machine(s) if a VNC viewer will be used.

CONFIGURE sub-menus

1. DVD Management
2. HDD Management
3. Rebuilt Machines

1. DVD Management



Upload DVD:

Funktion to upload an ISO image to the ArXtor

Download DVD:

Function to download an ISO image to a network folder

Remove DVD:

Function to delete an ISO image from the ArXtor

2. HDD Management



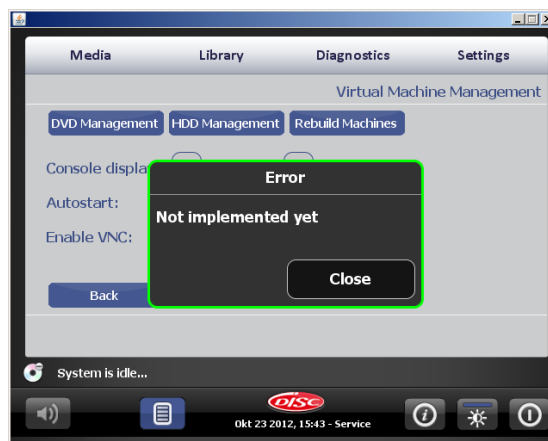
Upload HDD:

For uploading a HDD image from a network folder to the ArXtor

Download HDD

For downloading a HDD image from the ArXtor to a network folder

3. Rebuilt Machines:



Please note, this function is not implemented yet.

CONTROL MACHINE:



Control Machine 1 and/or 2:

Select the Virtual Machine



Power on:

To start the virtual machine

Power off:

To power off the virtual machine without shutting down

Shutdown:

To shutdown the virtual machine

Mount DVD:

To mount an installed ISO image to install an Operating System

APPENDIX A: TECHNICAL DATA

- Technical Specifications
- Slot Upgrades

TECHNICAL SPECIFICATIONS

ArXtor Lite

SPECIFICATIONS DISC ARXTOR LITE			
	ArXtor1000	ArXtor4000	ArXtor7000
Library characteristics:			
Capacity TB (BDXL 100GB Media)	4.5 – 10.5	14.5 – 40	51 – 69
Number of drives	1 – 2	2 – 6	2 – 10
Total # of Media Slots	45 – 105	145 – 400	510 – 690
SmartPacks (removable 15-discs)	3 – 4	4	4
Avg. media exchange times (seconds)	2	4	6
Automation connectivity	iSCSI	iSCSI	iSCSI
Drive connectivity	iSCSI	iSCSI	iSCSI
Media formats	BDXL-R, BD-ROM, BD-R, BD-RE, DVD, CD	BDXL-R, BD-ROM, BD-R, BD-RE, DVD, CD	BDXL-R, BD-ROM, BD-R, BD-RE, DVD, CD
Media capacity	Up to 128GB	Up to 128GB	Up to 128GB
Media characteristics	120 mm Single Sided Hard Coated Surface	120 mm Single Sided Hard Coated Surface	120 mm Single Sided Hard Coated Surface
Software Support:			
	Native Support for Windows and Linux	Native Support for Windows and Linux	Native Support for Windows and Linux
Net dimensions / weight:			
Width without stands	290mm / 11.5"	385mm / 15.2"	385mm / 15.2"
Width with stands	n/a	535mm / 21.1"	840mm / 33.1"
Height	451mm / 17.8" (11U)	1020mm / 40.2" (23U)	1547mm / 61" (35U)
Depth	730mm / 28.7"	705mm / 27.8"	705mm / 27.8"
Weight (without media)	30kg / 66lbs	70kg / 154lbs	110kg / 242lbs
Power consumption:			
Average (watts)	120	180	240
Peak (watts)	180	450	920
Power supply (autoswitching):			
	Redundant	Redundant	Redundant
Voltage	100 - 220 VAC	100 - 220 VAC	100 - 220 VAC
Frequency	50/60 Hz	50/60 Hz	50/60 Hz
Current	4 - 8 Amps	4 - 8 Amps	4 - 8 Amps
Thermal emissions in BTU's per hour:			
Average	410	615	820
Peak	615	1,540	3,140

* Product design and specifications (preliminary) are subject to change without notice ** Library/Media Slots shown for 2 drives, for each additional pair of drives, slot count is reduced by 30 slots

ArXtor Appliance

SPECIFICATIONS DISC ARXTOR APPLIANCE			
	ArXtor1000	ArXtor4000	ArXtor7000
Library characteristics:			
Capacity TB (BDXL 100GB Media)	4.5 – 10.5	14.5 – 40	51 – 69
Number of drives	1 – 2	2 – 6	2 – 10
Total # of Media Slots	45 – 105	145 – 400	510 – 690
SmartPacks (removable 15-discs)	3 – 4	4	4
Avg. media exchange times (seconds)	2	4	6
Automation connectivity	ISCSI	ISCSI	ISCSI
Drive connectivity	ISCSI	ISCSI	ISCSI
Media formats	BDXL-R, BD-ROM, BD-R, BD-RE, DVD, CD	BDXL-R, BD-ROM, BD-R, BD-RE, DVD, CD	BDXL-R, BD-ROM, BD-R, BD-RE, DVD, CD
Media capacity	Up to 128GB	Up to 128GB	Up to 128GB
Media characteristics	120 mm Single Sided Hard Coated Surface	120 mm Single Sided Hard Coated Surface	120 mm Single Sided Hard Coated Surface
Platform Characteristics:			
Virtual machines	2	2	2
Hard disks	2 X 500GB	2 X 500GB	2 X 500GB
Processor	Dual core T9400	Dual core T9400	Dual core T9400
Memory	8GB	8GB	8GB
Optional storage expansion:			
HDD	8 X 2.5" 1 TB disk (8TB)	8 - 16 X 2.5" 1 TB disk (16TB)	8 - 16 X 2.5" 1 TB disk (*16TB)
Hardware raid controller	Included	Included	Included
Software Support:			
	Support for Windows and Linux through 3 rd party storage mgt. software	Support for Windows and Linux through 3 rd party storage mgt. software	Support for Windows and Linux through 3 rd party storage mgt. software
Net dimensions / weight:			
Width without stands	290mm / 11.5"	385mm / 15.2"	385mm / 15.2"
Width with stands	n/a	535mm / 21.1"	840mm / 33.1"
Height	451 mm / 17.8" (11U)	1020mm / 40.2" (23U)	1547mm / 61" (35U)
Depth	730mm / 28.7"	705mm / 27.8"	705mm / 27.8"
Weight (without media)	30kg / 66lbs	70kg / 154lbs	110kg / 242lbs
Power consumption:			
Average (watts)	120	180	240
Peak (watts)	180	450	920
Power supply (autoswitching):			
	Redundant	Redundant	Redundant
Voltage	100 - 220 VAC	100 - 220 VAC	100 - 220 VAC
Frequency	50/60 Hz	50/60 Hz	50/60 Hz
Current	4 - 8 Amps	4 - 8 Amps	4 - 8 Amps
Thermal emissions in BTU's per hour:			
Average	410	615	820
Peak	615	1,540	3,140

* Product design and specifications (preliminary) are subject to change without notice ** Library/Media Slots shown for 2 drives, for each additional pair of drives, slot count is reduced by 30 slots

SLOT UPGRADES

DISC ArXtor-1000 , DISC ArXtor-4000 , DISC ArXtor-7000 are available in the following capacities:

DISC ArXtor-1000 - 45 media slots

DISC ArXtor-1000 - 105 media slots

DISC ArXtor-4000 - 145 media slots

DISC ArXtor-4000 - up to 400 media slots

DISC ArXtor-7000 - 510 media slots

DISC ArXtor-7000 - up to 690 media slots

Slot upgrades must be completed in the factory or on site by specially trained service staff. The slot upgrade is not available as a standard field upgrade kit.

For more information about slot upgrades, contact your DISC sales office.

APPENDIX B:

AGENCY APPROVALS

- FCC Declaration
- Declaration of Conformity

AGENCY APPROVALS

FCC DECLARATION

This equipment has been tested and found to comply with the limits for a Class B digital device, pursuant to Part 15 of the FCC Rules. These limits are designed to provide reasonable protection against harmful interference in a residential installation. This equipment generates, uses, and can radiate radio frequency energy and, if not installed and used in accordance with the instructions, may cause harmful interference to radio communications. However, there is no guarantee that interference will not occur in a particular installation. If this equipment does cause harmful interference to radio or television reception, which can be determined by turning the equipment on and off, the user is encouraged to try to correct the interference by one or more of the following measures:

- Reorient or relocate the receiving antenna.
- Increase the separation between the equipment and receiver.
- Connect the equipment into an outlet on a circuit different from that to which the receiver is connected.
- Consult the dealer or an experienced radio/TV technician for help.

Important: This product was FCC verified under test conditions that include the use of shielded cables and connectors between system components. It is important that you use shielded cables and connectors to reduce the possibility of causing interference to radios, televisions, and other electronic devices.

Should you have any problems contact your dealer.

DECLARATION OF CONFORMITY - ArXtor1000



EG-Konformitätserklärung	EC-Declaration of Conformity	CE-Déclaration de Conformité
<p>mit den Richtlinien 89 / 336 / EWG und 73 / 23 / EWG.</p> <p>Hiermit wird bestätigt, dass das Produkt</p> <p>Optical Library ArXtor 1000</p> <p>mit den folgenden Normen bzw. normativen Dokumenten übereinstimmt:</p> <p>EN 55022: 1998 + A1: 2000 Grenzwerte und Messverfahren für Funkstörungen von informationstechnischen Einrichtungen.</p> <p>EN 50024: 1998 + A1: 2001 Störfestigkeit von informationstechnischen Einrichtungen.</p> <p>EN 61000-3-2: 2000 EN 61000-3-3: 1995 + A1: 2001</p> <p>EN 60950, UL 1950, CUL C22.2No.950 Sicherheit von Einrichtungen der Informationstechnik.</p> <p>Das Qualitätssicherungssystem von DISC garantiert die Konformität.</p> <p>Hersteller:</p> <p>DISC Archiving Systems B.V. Waaderweg 52G 2031 BP Haarlem, Netherlands</p> <p>Ausstelldatum: 01.03.2012</p>	<p>per 89 / 336 / EEC and 73 / 23 / EWG.</p> <p>This is to confirm that the product</p> <p>Optical Library ArXtor 1000</p> <p>is in compliance with the following standards or other normative documents:</p> <p>EN 55022: 1998 + A1: 2000 Limits and methods of radio interference characteristics of information technology equipment.</p> <p>EN 50024: 1998 + A1: 2001 Information technology equipment-Immunity Characteristics- Limits and methods of measurement.</p> <p>EN 61000-3-2: 2000 EN 61000-3-3: 1995 + A1: 2001</p> <p>EN 60950, UL 1950, CUL C22.2No.950 Safety of information technology equipment.</p> <p>DISC quality assurance system assures compliance.</p> <p>Manufacturer:</p> <p>DISC Archiving Systems B.V. Waaderweg 52G 2031 BP Haarlem, Netherlands</p> <p>Date of issue of the declaration: 01-03-2012</p>	<p>avec 89 / 336 / CEE et 73 / 23 / EWG.</p> <p>Nous déclarons que le produit</p> <p>Library PDD ArXtor 1000</p> <p>est conforme aux normes ou autres documents normatifs suivants:</p> <p>EN 55022: 1998 + A1: 2000 Limites et méthodes de mesure des caractéristiques de perturbation radioélectriques produites par les appareils de traitement de l'information.</p> <p>EN 50024: 1998 + A1: 2001 Appareils de traitements l'information - caractéristiques d'immunité - limites et méthodes de mesure.</p> <p>EN 61000-3-2: 2000 EN 61000-3-3: 1995 + A1: 2001</p> <p>EN 60950, UL 1950, CUL C22.2No.950 Sécurité des matériels de traitement de l'information.</p> <p>La système d'assurance de la qualité de DISC garantit la conformité.</p> <p>Fabricant:</p> <p>DISC Archiving Systems B.V. Waaderweg 52G 2031 BP Haarlem, Netherlands</p> <p>Date d'établissement 7e la declaration: 01.03.2012</p>

Kees Machielsen
Managing Director

DECLARATION OF CONFORMITY - ArXtor4000



EG-Konformitätserklärung	EC-Declaration of Conformity	CE-Déclaration de Conformité
<p>mit den Richtlinien 89 / 336 / EWG und 73 / 23 / EWG.</p> <p>Hiermit wird bestätigt, dass das Produkt</p> <p>Optical Library ArXtor 4000</p> <p>mit den folgenden Normen bzw. normativen Dokumenten übereinstimmt:</p> <p>EN 55022: 1998 + A1: 2000 Grenzwerte und Messverfahren für Funkstörungen von informationstechnischen Einrichtungen.</p> <p>EN 50024: 1998 + A1: 2001 Störfestigkeit von informationstechnischen Einrichtungen.</p> <p>EN 61000-3-2: 2000 EN 61000-3-3: 1995 + A1: 2001</p> <p>EN 60950, UL 1950, CUL C22.2No.950 Sicherheit von Einrichtungen der Informationstechnik.</p> <p>Das Qualitätssicherungssystem von DISC garantiert die Konformität.</p> <p>Hersteller:</p> <p>DISC Archiving Systems B.V. Waaderweg 52G 2031 BP Haarlem, Netherlands</p> <p>Ausstelldatum: 01.03.2012</p>	<p>per 89 / 336 / EEC and 73 / 23 / EWG.</p> <p>This is to confirm that the product</p> <p>Optical Library ArXtor 4000</p> <p>is in compliance with the following standards or other normative documents:</p> <p>EN 55022: 1998 + A1: 2000 Limits and methods of radio interference characteristics of information technology equipment.</p> <p>EN 50024: 1998 + A1: 2001 Information technology equipment-Immunity Characteristics- Limits and methods of measurement.</p> <p>EN 61000-3-2: 2000 EN 61000-3-3: 1995 + A1: 2001</p> <p>EN 60950, UL 1950, CUL C22.2No.950 Safety of information technology equipment.</p> <p>DISC quality assurance system assures compliance.</p> <p>Manufacturer:</p> <p>DISC Archiving Systems B.V. Waaderweg 52G 2031 BP Haarlem, Netherlands</p> <p>Date of issue of the declaration: 01-03-2012</p>	<p>avec 89 / 336 / CEE et 73 / 23 / EWG.</p> <p>Nous déclarons que le produit</p> <p>Optical Library ArXtor 4000</p> <p>est conforme aux normes ou autres documents normatifs suivants:</p> <p>EN 55022: 1998 + A1: 2000 Limites et méthodes de mesure des caractéristiques de perturbation radioélectriques produites par les appareils de traitement de l'information.</p> <p>EN 50024: 1998 + A1: 2001 Appareils de traitements l'information - caractéristiques d'immunité - limites et méthodes de mesure.</p> <p>EN 61000-3-2: 2000 EN 61000-3-3: 1995 + A1: 2001</p> <p>EN 60950, UL 1950, CUL C22.2No.950 Sécurité des matériels de traitement de l'information.</p> <p>La système d'assurance de la qualité de DISC garantit la conformité.</p> <p>Fabricant:</p> <p>DISC Archiving Systems B.V. Waaderweg 52G 2031 BP Haarlem, Netherlands</p> <p>Date d'établissement 7e la declaration: 01.03.2012</p>

Kees Machielsen
Managing Director

DECLARATION OF CONFORMITY - ArXtor7000



EG-Konformitätserklärung	EC-Declaration of Conformity	CE-Déclaration de Conformité
<p>mit den Richtlinien 89 / 336 / EWG und 73 / 23 / EWG.</p> <p>Hiermit wird bestätigt, dass das Produkt</p> <p>Optical Library ArXtor 7000</p> <p>mit den folgenden Normen bzw. normativen Dokumenten übereinstimmt:</p> <p>EN 55022: 1998 + A1: 2000 Grenzwerte und Messverfahren für Funkstörungen von informationstechnischen Einrichtungen.</p> <p>EN 55024: 1998 + A1: 2001 Störfestigkeit von informationstechnischen Einrichtungen.</p> <p>EN 61000-3-2: 2000 EN 61000-3-3: 1995 + A1: 2001</p> <p>EN 60950, UL 1950, CUL C22.2No.950 Sicherheit von Einrichtungen der Informationstechnik.</p> <p>Das Qualitätssicherungssystem von DISC garantiert die Konformität.</p> <p>Hersteller:</p> <p>DISC Archiving Systems B.V. Waaderweg 52G 2031 BP Haarlem, Netherlands</p> <p>Ausstelldatum: 01.03.2012</p>	<p>per 89 / 336 / EEC and 73 / 23 / EWG.</p> <p>This is to confirm that the product</p> <p>Optical Library ArXtor 7000</p> <p>is in compliance with the following standards or other normative documents:</p> <p>EN 55022: 1998 + A1: 2000 Limits and methods of radio interference characteristics of information technology equipment.</p> <p>EN 55024: 1998 + A1: 2001 Information technology equipment-Immunity Characteristics- Limits and methods of measurement.</p> <p>EN 61000-3-2: 2000 EN 61000-3-3: 1995 + A1: 2001</p> <p>EN 60950, UL 1950, CUL C22.2No.950 Safety of information technology equipment.</p> <p>DISC quality assurance system assures compliance.</p> <p>Manufacturer:</p> <p>DISC Archiving Systems B.V. Waaderweg 52G 2031 BP Haarlem, Netherlands</p> <p>Date of issue of the declaration: 01-03-2012</p>	<p>avec 89 / 336 / CEE et 73 / 23 / EWG.</p> <p>Nous déclarons que le produit</p> <p>Optical Library ArXtor 7000</p> <p>est conforme aux normes ou autres documents normatifs suivants:</p> <p>EN 55022: 1998 + A1: 2000 Limites et méthodes de mesure des caractéristiques de perturbation radioélectriques produites par les appareils de traitement de l'information.</p> <p>EN 55024: 1998 + A1: 2001 Appareils de traitements l'information - caractéristiques d'immunité - limites et méthodes de mesure.</p> <p>EN 61000-3-2: 2000 EN 61000-3-3: 1995 + A1: 2001</p> <p>EN 60950, UL 1950, CUL C22.2No.950 Sécurité des matériels de traitement de l'information.</p> <p>La système d'assurance de la qualité de DISC garantit la conformité.</p> <p>Fabricant:</p> <p>DISC Archiving Systems B.V. Waaderweg 52G 2031 BP Haarlem, Netherlands</p> <p>Date d'établissement 7e la declaration: 01.03.2012</p>

Kees Machielsen
Managing Director